



Neglect Toolkit



- Where to find this document ?
- Safer Bradford Website
- Go to Safeguarding Children
- Sub section Practitioners
- Then click on the neglect link on the right hand side

Definition of Neglect

The definition is taken from

“Working Together to Safeguard Children 2018”

Which was the accepted definition at the time the strategy was written .

Purpose of the tool



To guide front line practitioners to:

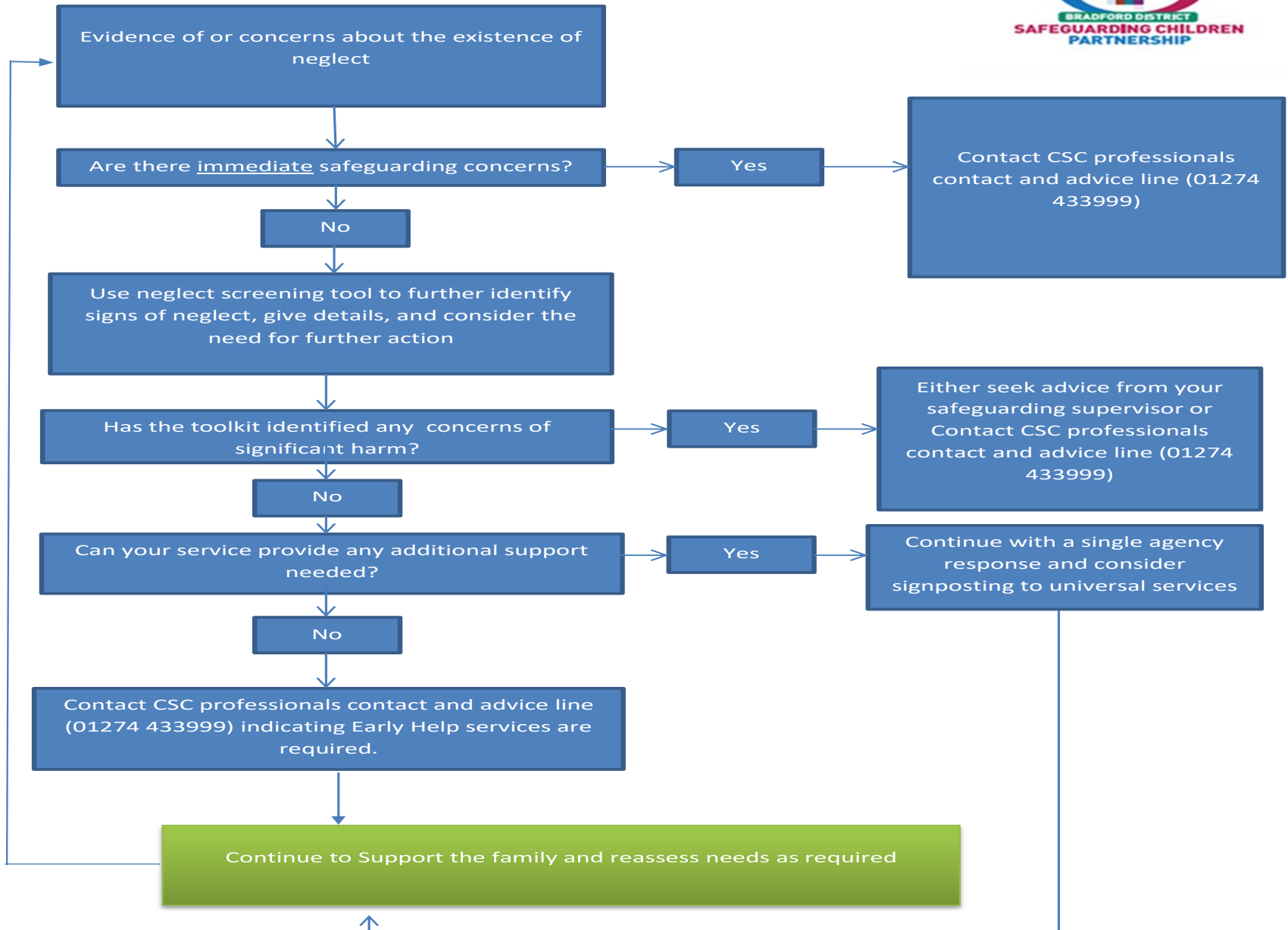
- Identify the signs of neglect at an early stage
- Recognise the need for further action
- Identify which agency/organisation/professional will carry out further assessments or intervention as required.

Flow chart



- To help summarise the process and guide what you should do see the flow chart on page 5 of the document

Flow Chart:



Using the Tool



- The toolkit should be used in conjunction with:
 - *The Bradford Continuum of Need Document*
 - *Bradford's Neglect Strategy 2023 - 2025*

Remember

- The toolkit is a guide only and it should not replace professional judgment or be the deciding factor in decision making.
- Practitioners should seek advice from their line manager if they are worried or unsure how to proceed

Using the Toolkit continued

- Should include having an honest and respectful conversation with the parent /carer of the child
- Consider what the practitioner observed, enable reflection and assist decision making about what needs to happen.
- Should help identify neglect and associated factors across all age ranges
- Provide the “Evidence” for areas of the assessment where you are **very concerned** or **sometimes concerned**

Identifying signs of Neglect

Complete the sections which include :-

- Basic details

Followed by “checklists” different aspects of neglect

- Emotional and behavioural
- Environmental
- Health and Physical care
- Parenting
- Education
- Feeding / Eating

Make a judgement / Evidence

- Very Concerned / Sometimes / Not Concerned
- Provide Evidence using the Signs of safety model :

What are we worried about?	What's working well?	What needs to happen?

What happens next ?

Give a summary in this section based on findings throughout the document:

<u>Danger Statements</u>	<u>Safety Plan</u>	<u>Safety Goal</u>

Onward referral? what needs to happen next?

- Provide summary based on findings throughout the document.

Have you discussed concerns with your line manager or a safeguarding lead? Yes ☐ No ☐

Do you need to contact the CSC advice line? Yes ☐ No ☐

If no, what further action is being taken?