

Bradford Safeguarding Adults Board (BSAB)

Annual Report 2020-21



Contents

Title	Page
Foreword – Independent Chair	3
What is the role of the Independent Chair?	5
Introduction to the Annual Report	6
About Bradford	7
About Bradford Safeguarding Adult Board	8
Our Shared Vision and Values	11
Board Membership and Structure	12
Safeguarding Adult Principles	15
Safeguarding Adult Reviews	16

Title	Page
Safeguarding Voice Group	17
Adult Social Care	19
West Yorkshire Police	23
Bradford District & Craven Clinical Commissioning Group (CCG)	26
Airedale NHS Foundation Trust	29
Bradford District Care Foundation Trust (BDCFT)	31
Bradford Teaching Hospitals Foundation Trust (BTHFT)	32

Title	Page
Did we make a difference ? – Case Studies	33
BSAB Dashboard & Intelligence	35
Safer Bradford Website	38
The impact of Covid 19	39
Challenges & Emerging Risks	41
Funding	42
Safeguarding Adults Acronyms	43
Contact Details / Report a Concern	44
Thank you	45

Independent Chair Foreword



This has been a different and challenging year for everyone, but it has also been a year where the SAB focus has been needed more than ever. As we come out of Covid, more safeguarding issues will likely emerge relating to carers, stress, and neglect, and care homes have become closed institutions and undoubtedly other challenging issues.

SAB has not turned away from the challenges. The end of the year sees SAB as a confident and professional entity with a clear focus on the safety of the people in Bradford, particularly those with care and support needs.

Lessons have been learned about the use of technology in conducting business and staying connected. Attendance and commitment to meetings have been high. I doubt all meetings will be held in person again.

SAB's key partners held very regular meetings to look at the impact of Covid on the delivery of services and possible abuse. We sent out regular newsletters jointly with the Chair of The Bradford Partnership (TBP), which were well received and widely circulated. We sought assurances about, e.g., the situation regarding Care Homes, Testing, PPE and picking up National Reports around, e.g., increase in learning disability deaths (LeDR), increase in DA, Suicides and Hate Crime in Gypsy, Traveller, Romany communities.

Independent Chair Foreword

We are very proud of being able to continue to hold Voice Meetings, albeit virtually. This was imperative to hear of current and emerging concerns and issues., e.g., scamming, online safety, and isolation. We are committed to developing an outreach strategy to take safeguarding messages out to the communities we have not reached previously.

-

We now need to focus on the impact of Covid on the most vulnerable, the Care Home market and experiences while retaining a focus on transitions end via our all-age exploitation sub-group.

-

I want to put on record my thanks and appreciation to all the Partners and the Safeguarding Partnership Business who have worked tirelessly throughout this very challenging period.

Jane Geraghty - Independent Chair – Bradford Safeguarding Adult Board

Role of the Independent Chair ?

To chair
programmed
meetings of BSAB &
extraordinary
meetings as
required

Liaise with the
strategic leads for
Safeguarding Adults to
ensure timely
management of the
partnership business.

Ensure that the Board
works effectively, with
good collaboration
between its members,
encouraging &
supporting the
development of
partnership working
between partners,
including its sub-groups

Ensure the Board
monitors and develops a
safeguarding adults
strategy and implements
this in line with an agreed
business plan which
maintains a clear focus
on outcomes for adults at
risk and their carers.

To liaise with the
Cabinet Member for
Adult Services,
Health and Wellbeing
Board and the
Overview and
Scrutiny Committee
as required

Meet with the
Director of Adult
Social Care
Services or
representatives
as required.

Provide assurance
that the Board
operates
independently of its
member agencies
and that any conflicts
of interest are
appropriately
managed.

Develop the Board
members' ability to
monitor, scrutinise
and constructively
challenge the
effectiveness of the
partnership's
safeguarding adults
work.

Promote an
awareness of
Safeguarding
Adults throughout
Bradford District

Introduction to the Annual Report

- This report lays out the strategic vision, outcomes and a reminder of our priorities.
- It gives information regarding internal structures and governance to hold partners to account
- There is information on the work with our statutory & strategic partners have achieved but also recognising some of the opportunities, emerging challenges and risks
- Information on Safeguarding Adults Reviews (SARs) and performance data we have collected throughout 2020/21 are also included

About Bradford

542,100

People live in Bradford

(an increase of 2,400 since 2019)



51%

Women



49%

Men

Bradford is the 5th largest local authority in England

Life expectancy at birth is 77.8 years for males & 81.6 for females

Bradford has median age of 36.7 which is lower than the median age for England (40.2)

Information from the 2011 census celebrates Bradford as one of the most ethnically diverse cities in the UK with a population being made up from the following ethnic groups :

White, Asian, Asian British, Black/African/Caribbean/Black British, Mixed Multiple Ethnic groups & Other Ethnic Groups

About Bradford Safeguarding Adult Board

The Bradford Safeguarding Adults Board is a statutory body established by the Care Act 2014. It is made up of senior people from organisations that have a role in preventing the neglect and abuse from adults . Its main objective is to protect all adults in the Bradford district who have needs for care and support and who are experiencing or at risk of abuse or neglect against which they are unable to protect themselves because of their needs

Legislation requires

- That local councils have a duty to promote the well being of carers; previously their duty of care was to only users of care services;
- That anyone receiving care and support from a regulated provider which has been arranged by the council will be covered by the Human Rights Act 1998;
- That councils must enable users or potential users of care services to access independent financial advice on their care funding;
- The introduction of an appeals system for care users to appeal against council decisions on eligibility to care & care funding

About BSAB



By law, the board must have three members which are: Bradford Local Authority, West Yorkshire Police & the NHS Bradford District & Craven Clinical Commissioning Group (CCG).

“The board has three core duties. They are:

- Develop and publish a strategic plan setting out how we will meet our objectives and how our member and partner agencies will contribute
- Publish an annual report detailing how effective our work has been
- Commission Safeguarding Adults Reviews (SARs) for any cases which meet the criteria for these

Other Legislation

Human Rights Act 1998 - The Human Rights Act (HRA) came into force in October 2000. It enables individuals to enforce 16 of the fundamental rights and freedoms. The fundamental rights include rights that impact directly on service provision in the health and social care sector. Rights particularly relevant to dignity in care include: the right to life, the right not to be subjected to inhuman or degrading treatment and the right to a family life. A balance has to be reached between rights and responsibilities. Not all rights are absolute and frequently practitioners are required to balance competing rights.

Mental Capacity Act 2005 - The Act applies to everyone involved in the care, treatment and support of people aged 16 and over living in England and Wales who are unable to make all or some decisions for themselves. The MCA is designed to protect and restore power to those vulnerable people who lack capacity

Equality Act 2010 - The Act protects people against discrimination, harassment or victimisation in employment, and as users of private and public services based on nine protected characteristics: age, disability, gender reassignment, marriage and civil partnership, pregnancy and maternity, race, religion or belief, sex, and sexual orientation

Domestic Abuse Bill 2019 –To make provision for and in connection with the establishment of a Domestic Abuse Commissioner; to prohibit cross-examination in person in family proceedings in certain circumstances; to make provision about certain violent or sexual offences, and offences involving other abusive behaviour, committed outside the United Kingdom; and for connected purposes.

Health & Social Care Act 2012 - The legislation had two key objectives: To improve the quality of care and outcomes for patients and to reposition the mode of provision so that health service provision becomes more patient-centred and facilitates choice

Our shared vision and Values

Our Statement of Purpose

Bradford Safeguarding Adults board (BSAB) will work together with partner organisations and people in our communities so that adults can live the best lives they can with their wellbeing and rights being supported, safe from abuse and neglect

Our Mission

To put the wellbeing & safety of adult(s) at risk of abuse at the heart of everything we do

Our Vision

To promote happiness by working together to help people feel safe, free from abuse & neglect

As a partnership board we will;

- Not tolerate abuse
- Reduce risks to adults in vulnerable situations as well as reacting effectively when it happens
- Make safeguarding personal and support adults at risk to achieve the outcomes they want. This means adults will have choice and control when going through the safeguarding journey. Their views and wishes will be at the heart of any decisions made
- Ensure local systems aim to protect people at risk are proportionate , balanced and responsive
- Work together to prevent harm and improve services
- Ensure there is communication with the public to develop awareness of the need to safeguard and protect adults in vulnerable situations from harm
- Provide information and support on how to access services to ensure safety of adults in vulnerable situations
- Hold local agencies responsible to give good reason for practice relating to Adult Safeguarding, Deprivation of Liberty Safeguards and Mental Capacity

Board Membership

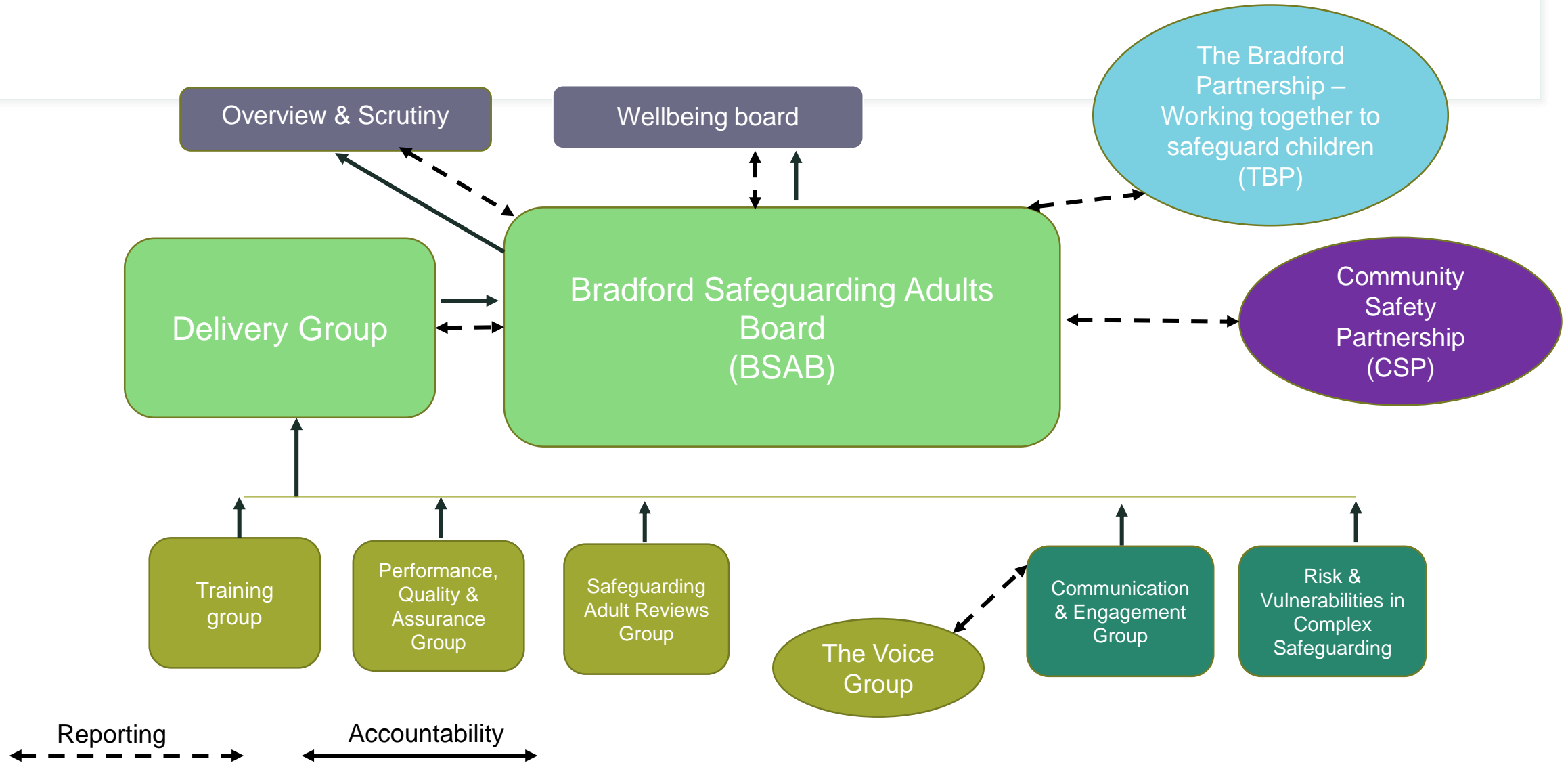
- Independent Chair
- City of Bradford Metropolitan District Council
- West Yorkshire Police
- Yorkshire Ambulance Service NHS Trust
- West Yorkshire Fire and Rescue Services
- Bradford District and Craven Clinical Commissioning Group (CCG)
- Airedale NHS Foundation Trust
- Hanover Housing
- Equality Together
- Healthwatch
- Equality Together
- Bradford People First
- West Yorkshire Community Rehabilitation Company
- National Probation Service
- Incommunities
- Bradford Teaching Hospitals NHS Foundation Trust
- Bradford District Care Trust NHS
- NHS England
- Alzheimer's Society
- Choice Advocacy



City of Bradford MDC

www.bradford.gov.uk

Board Structure 2020/21



How does BSAB link to other boards ?

Other BSAB links

- Bradford Wellbeing Board
- Bradford Health & Social Care Overview & Scrutiny Committee
- The Bradford Partnership – Working together to safeguard children
- Bradford Community Safety Partnership
- Bradford Domestic & Sexual Violence board

The BSAB link with other statutory and relevant boards / partnerships.

Where appropriate the BSAB Independent chair will agree to attend, meet with other board chairs to ensure continuity, joint working and shared resources

The Board shares responsibility for our All Age Exploitation sub-group (*formerly the Risk & Vulnerabilities in Complex Safeguarding*) & Communication and Engagement sub-group with The Bradford Partnership with contributions from Community Safety Partnership and Domestic and Sexual Violence Board .

Safeguarding Adult Principles – What does this mean for the adult ?

Empowerment – I am consulted about the outcomes I want from the safeguarding process and these directly inform what happens

Prevention – I am provided with easily understood information about what abuse is, how to recognise the signs and what I can do to seek help

Proportionality – I am confident that the professionals will work in my interest and only get involved as much as needed.

Protection – I am provided with help and support to report abuse. I am supported to take part in the safeguarding process to the extent to which I want and to which I am able

Partnerships – I am confident that information will be appropriately shared in a way that takes into account its personal and sensitive nature. Also , that agencies will work together to find the most effective responses for my own situation

Accountability – I am clear about the roles and responsibilities of all those involved in the solution to the problem

Safeguarding Adult Reviews

Section 44 of the Care Act

A Safeguarding Adults Review is carried out when an adult at risk dies or has experienced serious neglect or abuse, and there is concern that agencies could have worked more effectively to protect the adult.

A Safeguarding Adults Review is a multi-agency learning process. It aims to:

- Identify and promote good practice
- Encourage effective learning
- Make recommendations for future practice so that deaths or serious harm can be prevented from happening again

During the period from April 20 to March 21 BSAB did not publish any safeguarding adult reviews .

Our Safeguarding Voice Group



The Safeguarding Voice Group is made up of people who use services, carers and interested members of the public that work with the Bradford Safeguarding Adults Board (SAB).

Members of the Safeguarding Voice group give feedback and share their opinions on how we can keep adults safer in the Bradford District.

- Voice members ask questions
- bring information and issues to share at meetings
- learn about safeguarding

“The Group members continue to demonstrate their positive attitude as well as thinking creatively about new ways of supporting each other, keeping active and keeping in touch with virtual disco and quiz nights, ‘cook and book’ virtual meetings and regular exercise events”

“We continue to be amazed by the work that has been taking place over this last 18 months - overcoming individual personal difficulties to help themselves and others stay connected and supported. Our newsletter is still being shared widely and has been really well received. It has been noted at board level that we have continued to ‘meet’ when service user meetings in other districts have often not continued during the pandemic”

“I love being a part of the Safeguarding Voice Group, it’s such a wonderful group of people wanting to look after our community. I love hearing about what everyone has been up to, I don’t think you can leave a meeting without feeling inspired by the other members. Yes, the subjects we tackle are hard and there’s so much yet to do with challenges that we have never faced before because of Covid-19. But each time we come together, each person arrives with the attitude of what can I do to help. I’m very much looking forward to taking more training in the area of safeguarding”

Lay Member BSAB

It has been a difficult year for everyone, learning how to use Zoom and Microsoft Teams to attend virtual meetings – especially from home, where technology is not always good or available. Despite this, The Voice - which is a subgroup of SAB and made up of service users and supporting organisations, has kept going.

With help from staff in the Business Unit, a newsletter has been produced and reading the stories and activities of people with health problems has been really uplifting. Nobody has grumbled, they have managed the links to meetings even though this has been really difficult at times and we have continued to support each other. It has, however highlighted a group of people that have become more isolated by having no Wi-Fi or technology (laptops etc.) in their homes. It is not always that people are 'hard to reach' – it is that we are not using the right medium to communicate.

With this in mind, we are hoping to undertake some outreach work to contact more individuals within the Bradford district - including travellers, refugees and asylum seekers, so that they have the chance to have their voice heard. This is a challenge we must take on board to be truly inclusive and to ensure we use a language style that we can all understand.

As the Lay Member of the SAB Board, I have requested a glossary of terms used in order to be fully part of each meeting I attend. Each partner organisation has its own language and acronyms, so it is important to find a common language for all to use. As the main purpose of the SAB is to keep people safe we must remember that although stats are useful to keep us on track it is the clients, victims and people that are the important - and that we are there to help them. Gill Bowskill

Adult Social Care

“We need to be as confident as we can be that the right of every adult , including the most vulnerable , to live in safety, free from abuse and neglect, is promoted and protected as fully as possible. The Annual Report details how the Bradford Safeguarding Adults Board has delivered on the areas of work identified as partners. The report provides a picture of who is safeguarded in our city and district , in what circumstances and why . This helps us to focus on priorities for the future.”

Iain Macbeath – Strategic Director Health and Wellbeing

Adult Social Care

The Safeguarding Adults Service provided by Adult Social Care in the heart of the Health & Wellbeing Department at Bradford Council is the central point for all safeguarding adult concerns. This service includes the Multi - Agency Safeguarding Hub, which is a joint service which screens and prioritises responses, led by Bradford Council and West Yorkshire police colleagues and the Safeguarding Adults Team. A team of dedicated Social Workers provide support to those people who meet the legal threshold for safeguarding involvement as set out in Section 42 of the Care Act 2014. Over the previous 12 months these services have been at the forefront of assisting to provide frontline support to people who have care and support needs and who were thought to be at risk during the COVID-19 pandemic.

Following the announcement of the Government in March 2020 that the country would be subject to a national lockdown, the Safeguarding Adult Service in Bradford was mobilised to work differently to best respond to the pandemic and work to keep people safe. Social Workers were mobilised to work from home and receive and respond to safeguarding concerns in a manner that was necessary and proportionate to the concern.

Adult Social Care

The immediate concern raised regarding adult safeguarding during the pandemic was access to care homes and other care facilities for visiting staff, including social workers. This was prohibited in the main by emergency legislation and government and care providers, who understandably were working to contain COVID-19 and had to reduce the risk of cross-infection for people using their services. Therefore, while 'life and limb' safeguarding investigations could take place where a threshold was met of serious harm and/or possibly criminal intent and police involvement, the overall number of s42 enquires reduced. The number of safeguarding concerns reported to the Local Authority also decreased during the pandemic.

The second immediate impact for adult safeguarding, following the announcement of the first lockdown, was that lockdown itself proved significantly difficult for some people who had ongoing care and support needs. Where people had existing patterns of support, for example, going to day services or walks on any particular day, the disruption of lockdown led in some cases to ongoing safeguarding support to help people understand the risks, ensure that all restrictive support was necessary and proportionate and per new emergency legislation. Safeguarding work focused on providing that wherever possible arrangements could be made so that people who may have had limited understanding of the impact of COVID could safely be supported to access whatever services were made available, where it was safe and legal to do so within rapidly changing national guidance.

Adult Social Care

The safeguarding response from service areas was two-fold. Where there were clear s42 referrals and where there was a risk of harm or suspected harm, the safeguarding team responded often using tele-equipment such as conferencing platforms to initiate and investigate abuse issues. Secondly, services worked proactively, making contact with people across Bradford and District known to Bradford Adult Care Services to establish their immediate safety. This proactive approach helped significantly keep people safe, and as such, the service provided preventative support alongside allied professionals across the NHS, Police, and wider partners.

Throughout the year the Safeguarding Adult Service has continued to work to support people at risk of abuse.

West Yorkshire Police

West Yorkshire Police continues to be committed to active membership of The Bradford Partnership. During the past year, we have been represented at the board level by Temporary Superintendent Steve Greenbank, Chief Inspector Karen Lindsay, and Superintendent Richard Padwell & Chief Inspector Dan Ware. West Yorkshire Police is represented at all the key subgroups to the partnership board, where we continue to engage with all our partners on the board's priorities.

Alongside other agencies, the Bradford District police represent a bridge across from adult safeguarding into other vital areas of public protection, including domestic abuse and child safeguarding.

Our work on the pernicious issue of county lines drug dealing sees both children and vulnerable adults being exploited by the same offenders. We will continue to work across all partnerships to protect victims while targeting offenders.

We also recognise the challenges for both victims and perpetrators in accessing services between the ages of 16-25 as they transition from childhood to adulthood. "Policing has a crucial role to play in the identification, support, and safeguarding of adults who are at risk of harm. Perpetrators sometimes target those with specific vulnerabilities, such as mental health or isolation, believing that there is less chance of being caught.

I joined the senior leadership team at Bradford in January 2021 and am fully committed to working in partnership with the Bradford Partnership to keep Bradford residents, families, and communities safe and feeling safe. I welcome the challenge from partners and communities in holding me to account and will similarly hold partners to account for service delivery. I am proud to chair the All Age Exploitation Sub Group on behalf of the partnership."

Superintendent Richard Padwell – West Yorkshire Police Bradford District



West Yorkshire Police – Key Achievements

Through collaborative work with Bradford District Care Trust and the Local Authority created and developed the Mental Health (MH) triage car . Initially introduced as a pilot to address issues of the Section 136 detentions .

The triage car has a MH nurse/Social Worker working alongside a Police Officer and attend incidents where there is a MH element and MH assessment is needed, thereby reducing unnecessary S136 detentions and improving the outcome for the subject.

MH training to over 200 new Police Officers

Supt Richard Padwell is the chair of the tri board sub-group – All Age Exploitation . This sub-group is working towards a partnership assessment of exploitation covering the threat, harm and risk across the Bradford District.

The number of missing adults & children at risk through the pro-active use of the *Herbert Protocol & *Philomena Protocol were reduced .

* Herbert Protocol & Philomena Protocol are early intervention and risk reduction schemes to help find vulnerable people who are at risk of going missing.

West Yorkshire Police – Key Achievements

2000 less incidents of missing children and adults.

The volume of suspect repeat rate of offenders committing domestic abuse offences has continued to reduce for a second year.

The victim repeat rate has also reduced , meaning less victims of reported domestic abuse .

Area for development for 21/22 - maintain a focus on domestic abuse through the creation of a domestic abuse improvement plan to monitor progress & service delivery.

Bradford District & Craven Clinical Commissioning Group (CCG)

Overall responsibility and accountability for safeguarding sits with the accountable officer, Helen Hirst

The CCG adult safeguarding team provide advice and support to colleagues but as a commissioning organisation they also ensure that compliance and quality are closely scrutinised, supported and where appropriate, challenged. The team also supports the safeguarding response and recovery plans for those organisations falling short of these essential standards and their statutory partners within adult social care.

As statutory partners of the BSAB, the CCG maintained a presence at board meetings, significantly contributing to the delivery of the assurance processes of BSAB. The duty to participate in and oversee the health contributions to Safeguarding Adults Reviews was fully met.

The CCGs reviewed their safeguarding adult resource in line with recommendations outlined in the intercollegiate document Safeguarding Adults: Roles and Competencies for Health Care Staff, and increased staffing levels to allow better delivery of safeguarding requirements and duties. A newly created Specialist Practitioner – Safeguarding Adults and the MCA/ Liberty Protection Safeguarding were also agreed and recruited to .

The CCGs' adult safeguarding team continue to work cohesively and in collaboration with other partner agencies and has a shared commitment to safeguard those at risk of harm and abuse in Bradford'. On 1 April 2020 the 3 NHS Clinical Commissioning Groups (CCGs) for Bradford District merged forming the Bradford District & Craven Clinical Commissioning Group

Bradford District & Craven Clinical Commissioning Group (CCG) – Key Achievements

In response to the Covid 19 pandemic and remote working, safeguarding training was developed, delivered and maintained throughout to CCG staff via virtual training platforms

All training by the CCG refers to Making Safeguarding Personal (MSP) – This helps staff and clinicians to understand their roles and responsibilities in relation to safeguarding adults

Developing and circulating safeguarding communications & information guidance to Primary Care staff on virtual examination , domestic abuse , Mental Capacity Act & vaccination aide-memoire to support practice.

Named Doctor & Specialist Practitioner developed and delivered a wide range of training , including the role of carers in safeguarding to GPs, Practice Safeguarding & GP Registrars

Bradford District & Craven Clinical Commissioning Group (CCG) – Key Achievements

Have been responsive & worked in partnership across health and social care systems to support partners and seek assurance that safeguarding adults remained a priority during the pandemic.

As a consequence of the pandemic the CCG adapted safeguarding & quality systems to monitor providers & how well they are doing in protecting people from abuse & neglect

Strengthened relationships within the CCG and multi-agency partnership to ensure safeguarding adults is at the centre of decision making , including service changes as a result of the pandemic

The Personalised Commissioning Team have made timely applications for community deprivation of liberty cases to the Court of Protection to ensure actions and restrictions are proportionate and necessary.

Airedale NHS Foundation Trust

- Airedale NHS Foundation Trust is an award winning integrated NHS hospital and community services Trust. We provide high quality, personalised, acute, elective, specialist and community care for a population of over 200,000 people from a widespread area covering West and North Yorkshire and East Lancashire.
- We employ over 3000 permanent staff between the Trust and its subsidiaries and have over 350 volunteers
- We provide services from our main hospital site, Airedale Hospital, and from community hospitals, as well as health centres and general practices (GPs).



Airedale NHS Foundation Trust Key Achievements

Maintained safeguarding service across the Trust throughout the pandemic and have actively engaged with multi-agency partners working remotely.

Continued to deliver safeguarding training throughout the pandemic using a blend of training methods such as e-learning , small face to face groups, self directed study packages, webinars, ward-based training, lectures and newsletters

Developed a 12-month pilot programme of a hospital Independent Domestic Violence Advisor (IDVA) service based within the Trust



Bradford District Care Foundation Trust (BDCFT)

BDCFT Safeguarding Adults Policy and Procedures were revised in July 2020 following the launch of the joint multi – agency Safeguarding Adults Policy & Procedures (West Yorkshire, North Yorkshire & York)

All safeguarding mandatory training is above the threshold of 80%

Audit work has continued to evaluate learning & improve the quality of safeguarding practice

Providing valuable contributions to BSAB & sub-groups as an active member



Bradford Teaching Hospitals Foundation Trust (BTHFT)

Despite the significant impact and challenge on services Covid 19 presented, BTHFT maintained a safeguarding adults service throughout.

Recruitment of a Mental Health Specialist Practitioner

A pilot project of an enhanced care support worker to work with patients with additional needs such as , dementia, learning disabilities , cognitive impairment or mental health diagnosis.

This project has allowed for early recognition of concerns and a more timely response.

Did we make a difference ? – Case Study 1

Why was the safeguarding concern raised?

Concern raised by the allocated advanced practitioner from the area team. The Adult at Risk (AaR) family think she is unable to protect herself from the toxic relationship she has with her ex-husband who still lives in the property. Family are also trying to obtain a Lasting Power of Attorney (LPA).

Brief context to the case:

Several safeguarding concerns have been submitted by social workers from the area team since May 2020. All concerns are in relation to the same issues and most make reference to complex family dynamics. It appears that allegations and counter allegations are made by different family members. All the concerns, except one, were submitted without seeking consent or making the AaR aware that a referral will be made. It was therefore important that our involvement focused on what the AaR wants to happen and enable choice and control.

What action did you take to manage the risk?

- Enquiries made and it was established the AaR has consistently refused support from Adult Social Care and is sick of people being involved in her life and feels she is being deprived of her liberty due to the stroke. She has an advocate who expressed that she knows her own mind and is able to protect herself.
- Established AaR does not want to sign over the LPA to two of her children as she is worried that they will leave the third one out. AaR refused to sign documents that were presented to her, demonstrating an ability to protect herself.
- Established that the AaR also chooses to let her ex-husband stay living in the home and knows the risks involved. Together with her son they devised a plan that if she did not feel safe to take herself to the local café and the staff will call her son. This has been tried and works.

What was the outcome?

- The AaR remained living in her home in line with her wishes despite resistance from her family and the allocated worker.
- Challenged the advance practitioner with the 5 principles of MCA and AaR to make decisions that may well be deemed unwise by others.
- Safeguarding concern closed down at stage 2 as per AaR views wishes.

Did we make a difference ? – Case Study

Why was the safeguarding concern raised?

Concern raised by family friend of Adult at Risk (AaR), PATCH was AaR partner / carer. Alleged abuse is that of domestic abuse, controlling behaviour and financial abuse. Neglect was also identified through my discussions with AaR.

What action did you take to manage the risk?

- Text AaR to request she calls me when it is safe. Numerous texts exchanged between myself and AaR and she told me she “wants to go somewhere he can’t find me”. AaR called me and said she is scared of him and what he may do to her (previously been in prison for DV against her). Discussed options with AaR about if she could stay with a family member however she could not manage stairs so this was not an option.
- Liaised with area team manager and requested calls are made to secure a bed in a place of safety for AaR
- With consent, reported concerns to the police and they deemed the report as a priority.
- Made referral to Domestic Abuse services
- Spoke to housing officer to make them aware of concerns and establish whether they could evict PATCH – not on tenancy, resides in Scarborough but states he is unable to get back due to public transport issues due to the pandemic.
- Police visited within the hour and advised they would take AaR to the place of safety identified by ASC.

What was the outcome?

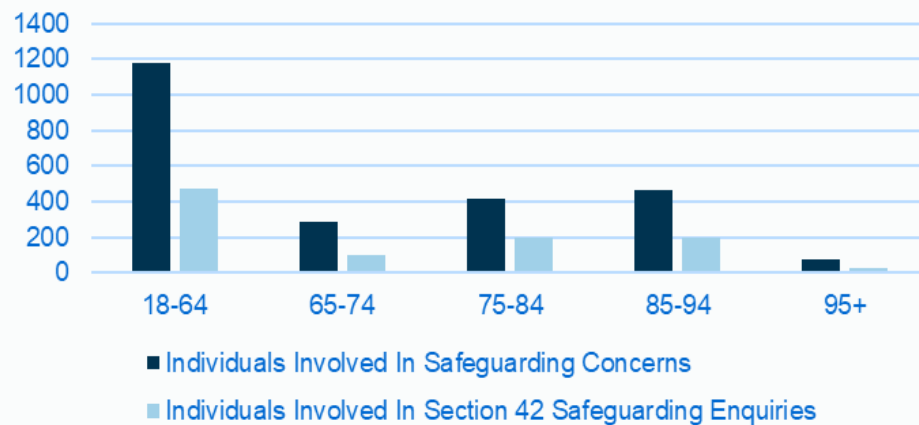
- AaR was safely transferred there and case was progressed to area team for stage 3. AaR was supported to obtain a non-molestation order, PATCH was evicted, locks were changed and there was an ongoing investigation into the financial abuse. AaR was due to move into an extra care housing scheme however sadly passed away suddenly in her sleep whilst in the place of safety.

BSAB Dashboard & Intelligence

Section 42 enquiry

A Section 42 enquiry must take place if there is reason to believe that abuse or neglect is taking place or is at risk of taking place, and the local authority believes that an enquiry is needed to help it to decide what action to take to support and protect the person in question.

2020-21 Individuals by Age Group



The graph to the right shows where the Individuals involved in a Concern and/or Section 42 Enquiry had a primary care need. Source: Safeguarding Adults Collection (SAC) BMDC. The age bracket with the highest number of concerns was 18-64 with 48%, followed by 85-94 years olds with 19%.

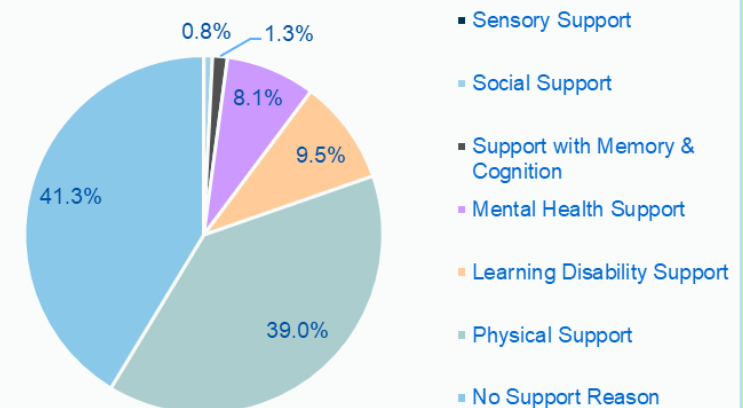
The graph to the left shows the number of Individuals involved in a Concern and/or Section 42 Enquiry during the financial year of 2020-21.

The age bracket with the highest number of concerns was 18-64 with 48%, followed by 85-94 years olds with 19%. 55% of the Concerns were recorded as female, 43% were male and 2% were not recorded.



55%
Women

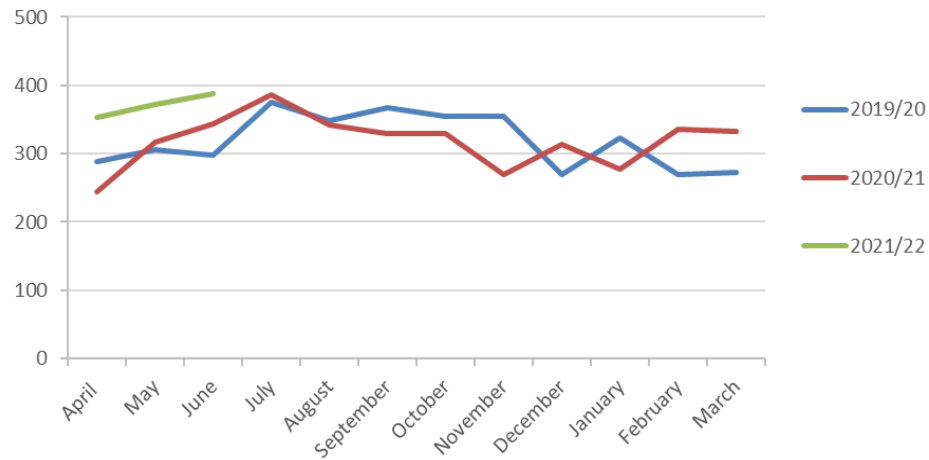
2020-21 Primary Support Reason



43%
Men

BSAB Dashboard & Intelligence

Annual Concern Volume Comparison



Over the past 27 months, April 2020 had the least number of concerns totalling 244 and Jun 2021 had the highest with 388.

There appears to be a seasonal dip occurring during November.

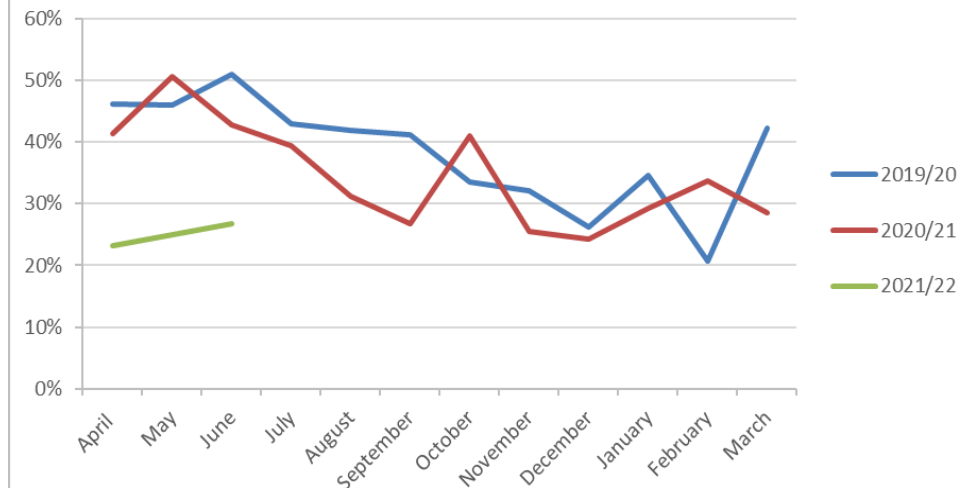
Over the past 27 months, February 2020 had the lowest conversion rate at 21%.

Jun 2019 and May 2020 had the highest, both with a conversion rate of 51%.

The average number of concerns per quarter is 1016, with an average conversion rate of 30%.

We would expect to see the number of concerns to vary due to outside factors, but the conversation rate should increase or remain static, as awareness, processes and reporting are embedded.

Annual Conversion Rate Comparison

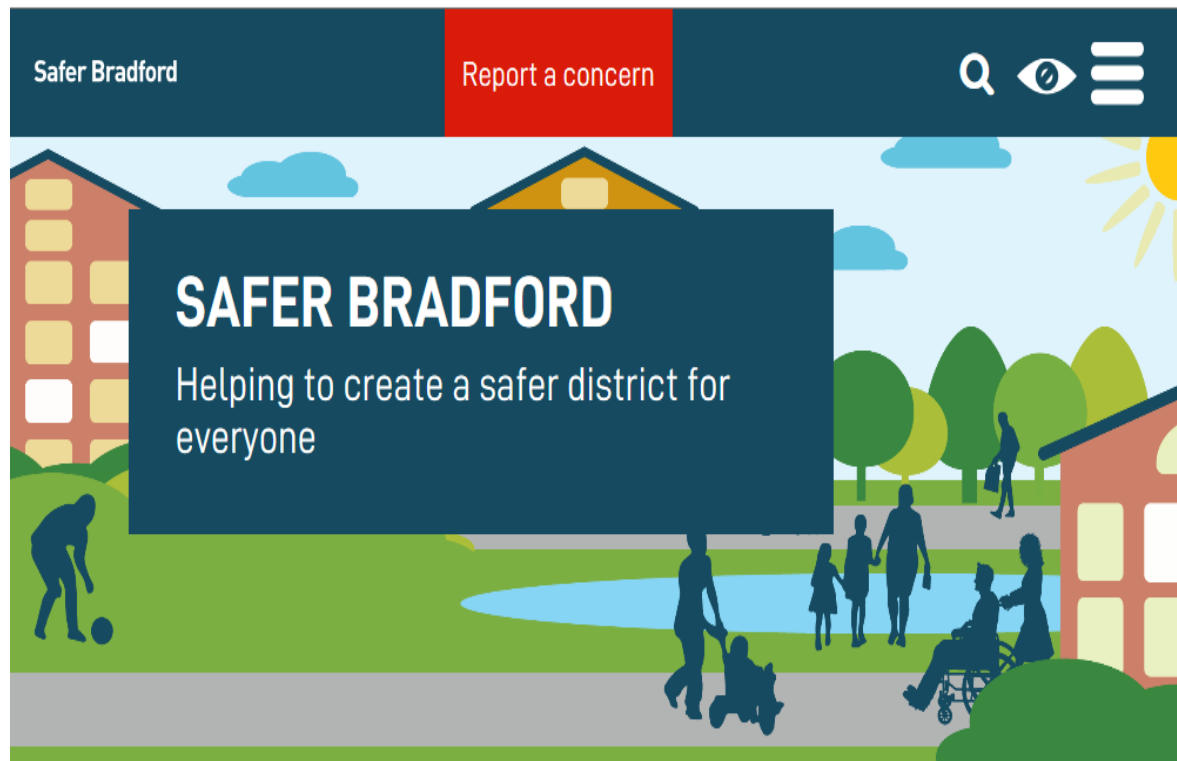


Training

- The Training sub-group of Bradford District Safeguarding Adults Board (SAB) has the responsibility for the development and co-ordination of the safeguarding adults multi-agency training programme. Partner agencies are expected to provide in-house safeguarding adults training for all staff.
- The last 12 months have been particularly challenging. In the absence of a Safeguarding Adults Board lead safeguarding trainer and in response to the impact of Covid-19, two Safeguarding Adults e-learning training courses were commissioned and launched by the Business Support Unit in May 2020. The training has been made available to all partners.
- There are two levels of training, Level 1 covers the basic understanding of safeguarding adult principles, and Level 2 is aimed at (but not limited to) people who work in roles that require additional skills and knowledge.
- In response to the Safeguarding Adult Board priorities, learning from statutory reviews and anticipated training support from the Business Unit there are plans for a blended approach to multi-agency learning for 2021-22. This will include e-learning, learning events and virtual learning sessions.



Website



- Since January 2021 - The total number of visits to the site there have been:
- 23,264 users
- 33,493 sessions (equivalent to visits)
- 82,869 page views (total number of times pages on the website were viewed)

The impact of Covid 19

COVID-19 has had a significant impact on the work of BSAB from 23rd March 2020. Because of responding to this crisis services, resources, functions, plans and programmes have been re-prioritised as our partners have responded to a rapidly changing and fluid situation that has included the regular provision of new guidance and legislation. Staff and volunteers have been doing an incredible job in very difficult circumstances, working tirelessly through complex and challenging situations. In doing so they have created new ways of working and gone above and beyond to ensure vital services keep running and that adults, children and their families receive the help and support they need.





The impact of Covid 19

As a response to Covid 19 Pandemic and the national lockdown that took place in March 2020, BSAB established a Response and Recovery Group whose membership reflected all partners. The group initially met every week, and this was adjusted according to need, and pressures on partners ability to attend and contribute.

Each meeting provided an opportunity for partners to share emerging themes from their service including challenges, impact on services and examples of good practice. Where issues were been raised locally, regionally and nationally these were also discussed, and assurance sought.

A weekly letter was produced by the Chairs of both BSAB & TBP outlining the work was continuing across both boards and assurances received.

Other key areas of activity included: Development and publication of Safeguarding in the “Coronavirus Crisis” – Information for Volunteers on the Safer Bradford website. This was also used by the lead offers for the community hubs as formed part of the induction training for those volunteers

Section on the Safer Bradford website created specifically designed for advice and guidance during Covid-19 outbreak

Enabled the Safeguarding Voice to hold virtual meetings, with a smaller number of members. Business unit staff sought creative ways to engage wider and have developed a newsletter to share information across the group.



Challenges & Emerging Risks

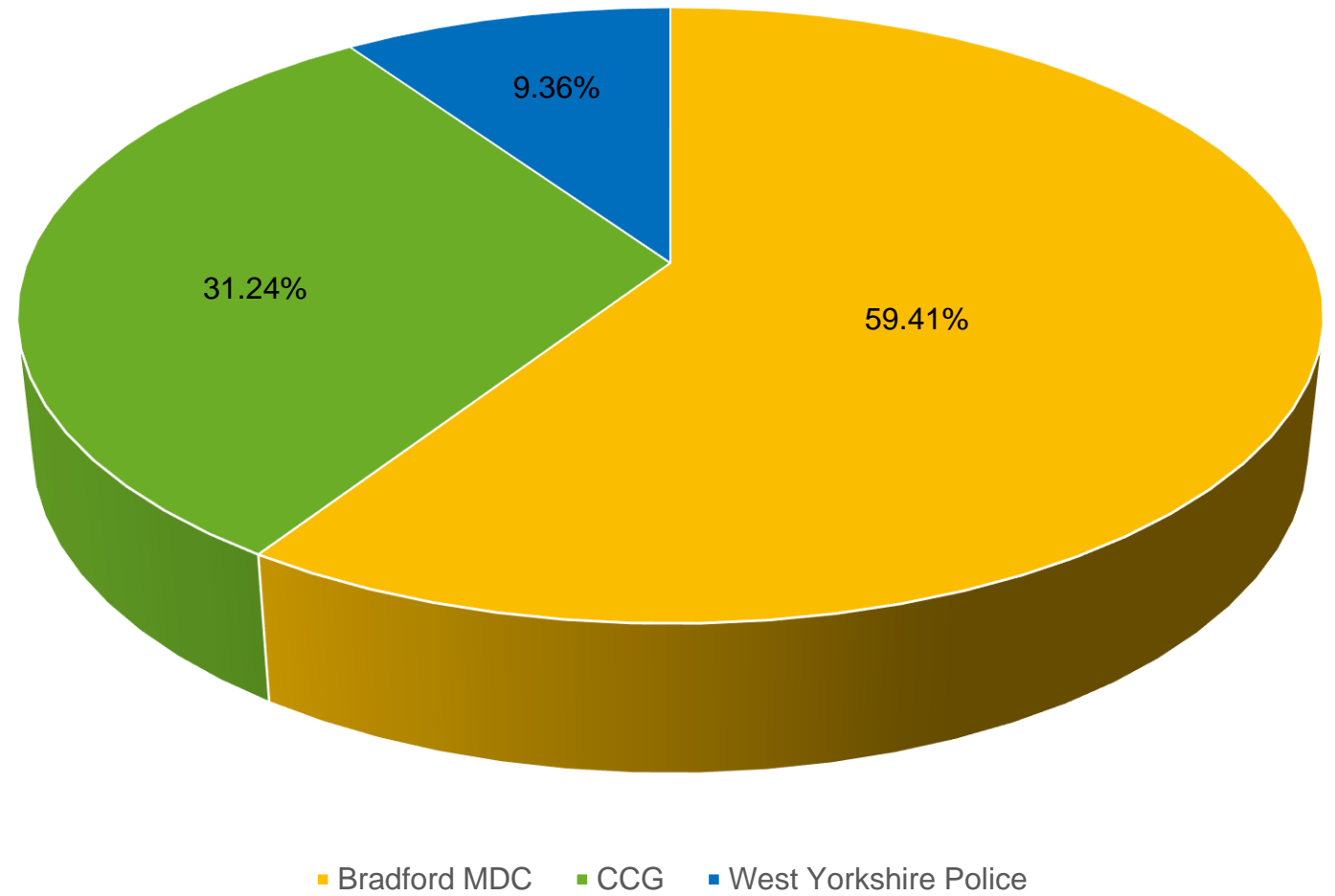
- Multi-Agency training offer has been limited during this period – this is an essential area for development , investment and resource.
- The unknown volume of safeguarding risks & issues as a consequence of the impact of Covid 19 together with protracted periods of lockdown will have on all partners & subsequent demand on staff whilst services recover.
- The abolishment of the CCG and move to the new integrated Care System (ICS)
- Transitional safeguarding – How we collectively safeguard adolescents moving into adulthood

Funding

Base budget contributions 2020/21

- Bradford Council - £109,800
- Clinical Commissioning Group - £57,729
- Police - £17,292

Contributions



Safeguarding Adults Acronyms

- AaR – Adult at Risk
- ADASS – Association of Director of Adults Social Services
- BSAB – Bradford Safeguarding Adults Board
- CSP – Community Safeguarding Partnership
- CQC – Care Quality Commission
- CCG – Clinical Commissioning Group
- DA – Domestic Abuse
- DBS – Disclosure and Barring Service
- DoLS – Deprivation of Liberty Safeguards
- ICS – Integrated Care System
- LA – Local Authority
- MASH – Multi-Agency Safeguarding Hub
- MCA – Mental Capacity Act
- MSP – Making Safeguarding Personal
- SAR – Safeguarding Adult Review
- TBP – The Bradford Partnership

BSAB wishes to thank



The Independent Chair and 'Safeguarding Partners' want to express their gratitude to the whole of the adults' workforce for their outstanding contribution and continued commitment to safeguarding and promoting the health & wellbeing of adults in Bradford

- "Abuse and neglect can happen to anybody, regardless of individual characteristics, and can occur in any setting, including someone's own home, public place or hospital. Our Safeguarding Adults Board in Bradford is a great partnership of professionals who take action to raise awareness, reduce abuse and neglect and act when it is discovered. As an elected councillor I'm proud of what we've achieved and know our partners want to do even more"

Councillor Sarah Ferriby – Lead member for Healthy People and Places

Contact details

The Safer Bradford website offers information and advice <https://www.saferbradford.co.uk/adults/>

What should I do if I think I am being abused or that someone else is being abused?

If you have been told about or notice abuse or neglect:

Ensure the immediate safety and welfare of the adult and any other person at risk

If urgent attention is needed for health or safety dial **999** emergencies

If a crime needs to be reported call the police on **101** or you can call Crimestoppers on **0800 555 111**

Preserve any evidence

Accurately record the incident, any action or decisions. Make sure you sign it and add the date and time.

Bradford Council's Multi-Agency Safeguarding Hub (MASH) is the single point of contact to report safeguarding concerns. The MASH operates in partnership with West Yorkshire Metropolitan Police.

Please note that Adult Safeguarding concerns reported to the MASH are screened by both the Local Authority and Police.

You can contact the MASH team through our [online form](#) or by telephone on 01274 431077.