

You can draw a picture of your Support Worker here.

A large, empty rectangular box with a blue border, intended for drawing a picture of a Support Worker.

You can draw a picture of anything you want here – it's your choice!

A large, empty rectangular box with a blue border, intended for drawing a picture of anything the user wants.

# Visting Our SARC: A Guide for Children





"Hello" Welcome to our centre. We are here to help make sure that you are happy, healthy and safe.



You are visiting our centre because someone has told us that they are worried about you.



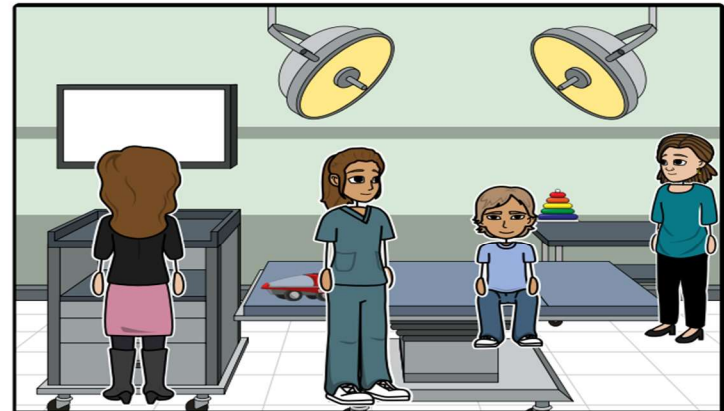
Lots of children visit our centre, and our job is to check that they are all OK.



We have lots of toys for you to play with. We like playing with the toys too!



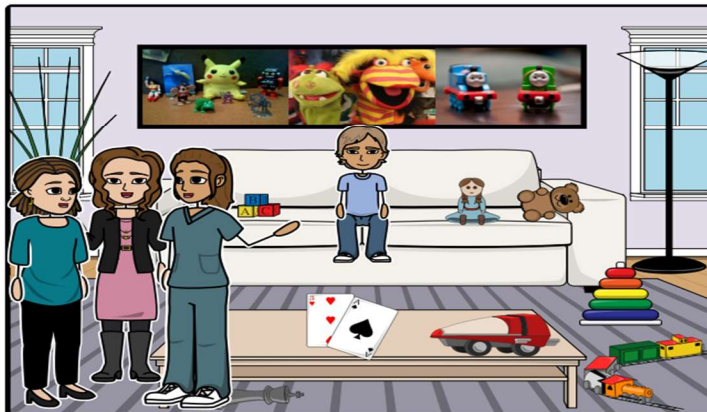
Once you have played with the toys, the Doctor will show you to their Doctor's room.



In this room, the Doctor will do a check-up on your body. They might use a special camera, and take some notes too.



The check-up won't hurt at all. But, if you are not comfortable during the check-up, just let your Doctor know.



After your check-up, the adults will talk, and you will be allowed to play with our toys again.



After the adults have talked to each other, we can say "Goodbye!"

The Doctors and Support Workers at our centre are here for you. They will listen to you, and won't make you do anything you don't want to do. This visit is to make sure that you are happy, healthy and safe.